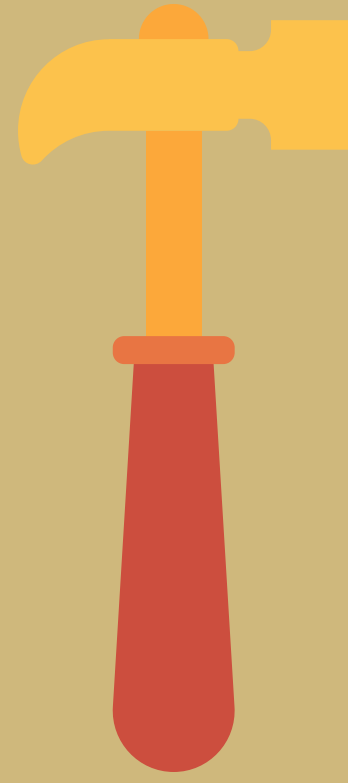


Holland Hexagon

Realistic

"doers"

Likes to work with animals, tools, or machines, values practical things you can see & touch, sees self as practical, mechanical & realistic



Investigative
"thinkers"

Problem-solver, values understanding, precise, scientific & intellectual

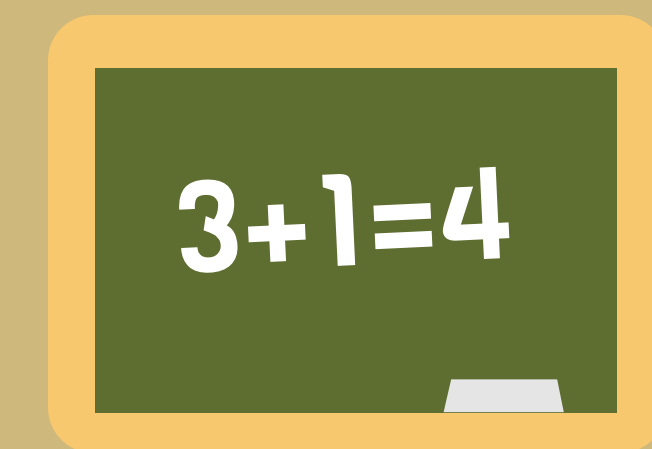
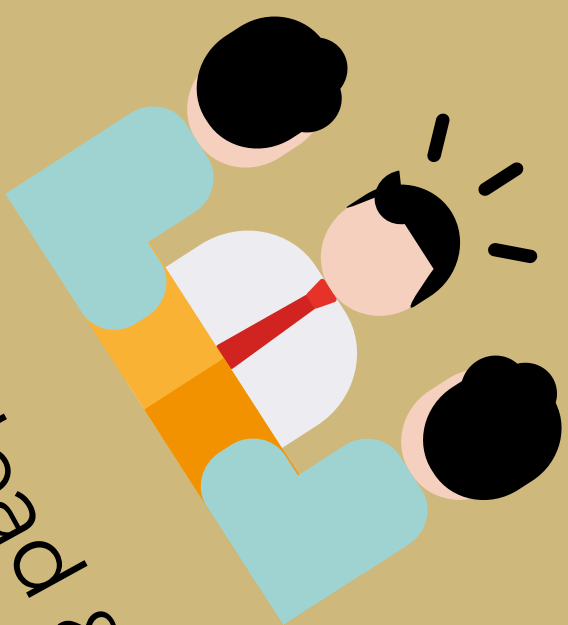
Conventional
"organizers"

Orderly, likes to work with numbers, systematic, values success in business, follows set plan



Enterprising
"persuaders"

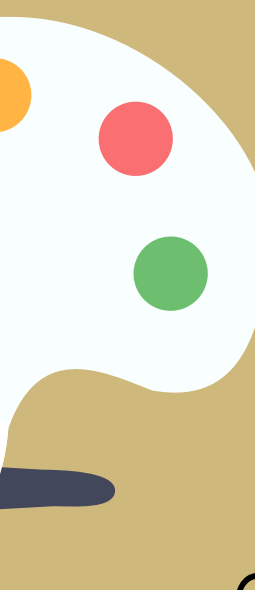
Likes to lead & sell things & ideas, values success in politics, business, energetic, ambitious, & sociable



Likes to help people, teach, provide information, values solving social problems, helpful, friendly, & trustworthy

"helpers"

Social



Likes to create art, drama, crafts, expressive, original, & independent

"creators"

Artistic

Majors by Holland Code

Social "the helpers"

Criminal Justice
 Social Work
 Nursing
 Education
 Anthropology
 English
 Political Science
 Psychology
 Sociology
 Foreign Languages
 Women's & Ethnic Studies

Enterprising "the persuaders"

Business
 Education
 Communication
 English
 Philosophy
 Political Science
 Women's & Ethnic Studies
 Meta Major(s):
 Business & Entrepreneurship, Society, Behavior & Public Service

Investigative "the thinkers"

Biochemistry
 Computer Security
 Criminal Justice
 Engineering
 Biology
 Chemistry
 Math
 Physics
 Computer Science
 Meta Major(s):
 STEM

Artistic "the creators"

History
 Communication
 English
 Philosophy
 Visual & Performing Arts
 Game Design & Development
 Meta-Major(s):
 Arts, Humanities & Media

Realistic "the doers"

Human Services
 Meta Major(s):
 Education & Teaching, Society, Behavior & Public Service

Computer Science
 Nursing
 Health Care Science
 Biology
 Biochemistry
 Chemistry
 Geography & Environmental Studies
 Engineering
 Meta-Major(s): Health, STEM

Conventional "the organizers"

Engineering
 Business
 Economics
 Geography & Environmental Studies
 Math
 Physics
 Computer Science
 Computer Security
 Meta-Major(s): STEM, Business & Entrepreneurship

"How To" Use Holland Hexagon for Major Exploration

1. Take the FOCUS 2 assessment test to find out your Holland Codes. See UCCS's Career Center for information on how to complete the FOCUS 2 assessment: <https://www.uccs.edu/career/>
2. Once you've taken the FOCUS 2 assessment, refer to this document to understand what your Holland Codes mean in terms of personality and how they relate to majors & meta-majors.
3. Now that you have some information regarding your Holland Codes and how they relate to majors & meta-majors, start looking at advising guides: <https://www.uccs.edu/advising/majors-and-minors>, degree audits: <https://www.uccs.edu/advising/degree-audit>, and the UCCS catalog: <http://catalog.uccs.edu/> for information on major's course requirements, prerequisites, admission policies, etc that can ultimately help you further your own knowledge needed to make a decision on a major in the future.
4. For assistance with step #3, or to declare your major, please schedule an appointment with an academic advisor by calling 719-255-3260 or stop by Main Hall 208.